

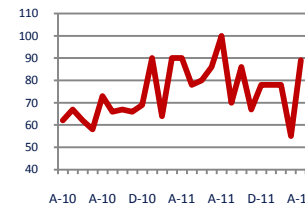
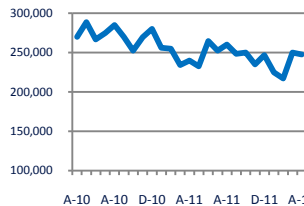
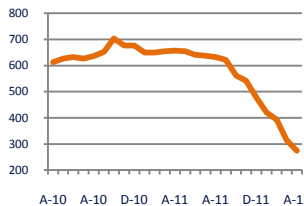
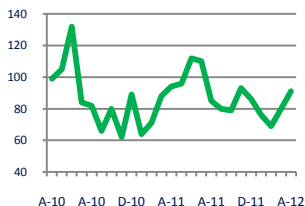


Focus On: Bowie Housing Market

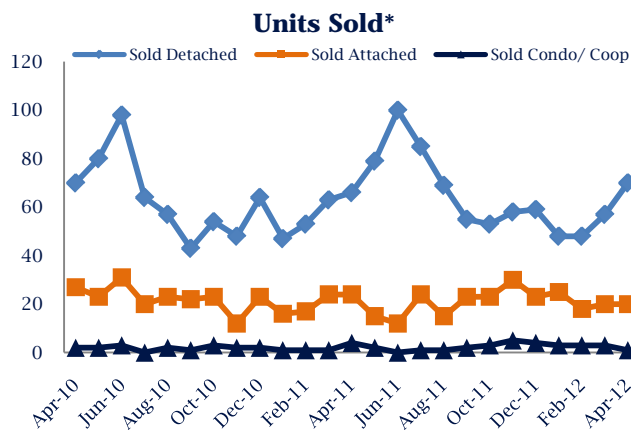
April 2012

Zip Code(s): 20715, 20716, 20720 and 20721

Units Sold 91	Active Inventory 274	Median Sale Price \$247,500	Days On Market 89
-------------------------	--------------------------------	---------------------------------------	-----------------------------



Down - 3% Vs. Year Ago	Down - 58% Vs. Year Ago	Up 3% Vs. Year Ago	Down - 1% Vs. Year Ago
----------------------------------	-----------------------------------	------------------------------	----------------------------------

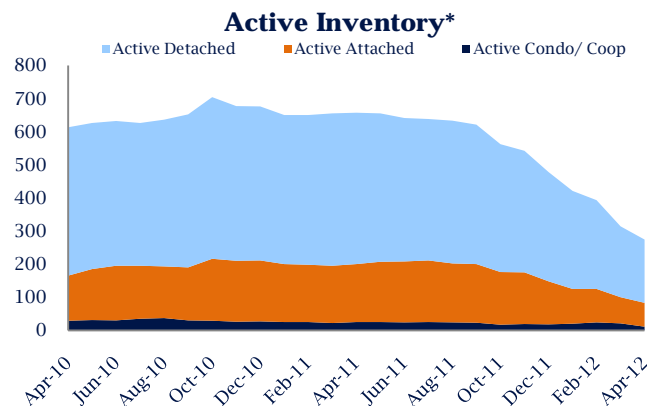


Units Sold

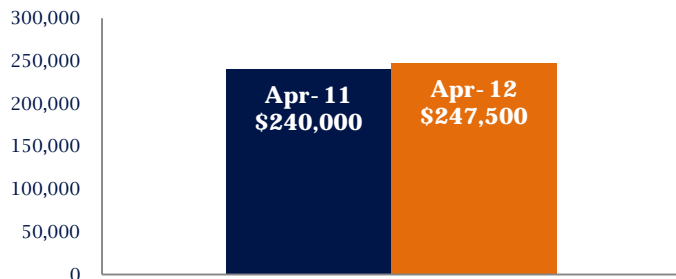
There was an increase in total units sold in April, with 91 sold this month in Bowie versus 80 last month, an increase of 14%. This month's total units sold was lower than at this time last year, a decrease of 3% versus April 2011.

Active Inventory

Versus last year, the total number of homes available this month is lower by 383 units or 58%. The total number of active inventory this April was 274 compared to 657 in April 2011. This month's total of 274 is lower than the previous month's total supply of available inventory of 314, a decrease of 13%.



Median Sale Price



Median Sale Price

Last April, the median sale price for Bowie Homes was \$240,000. This April, the median sale price was \$247,500, an increase of 3% or \$7,500 compared to last year. The current median sold price is 1% lower than in March.

Median sale price is the middle sale price in a given month. The same number of properties are above & below the median.

Bowie are defined as properties listed in zip code/s 20715, 20716, 20720 and 20721.

*Detached, Attached, and Condo varies by local area Multiple Listing Service (MLS) definition. For more information regarding your specific market, contact one of Long & Foster's knowledgeable and experienced sales associates.

Information included in this report is based on data supplied by MRIS and its member Association(s) of REALTORS, who are not responsible for its accuracy. Does not reflect all activity in the marketplace. Information contained in this report is deemed reliable but not guaranteed, should be independently verified, and does not constitute an opinion of MRIS or Long & Foster Real Estate, Inc.





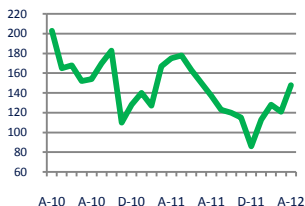
Focus On: Bowie Housing Market

April 2012

Zip Code(s): 20715, 20716, 20720 and 20721

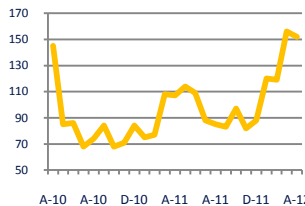
New Listings

148



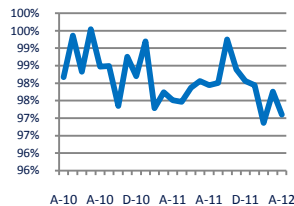
Current Contracts

152



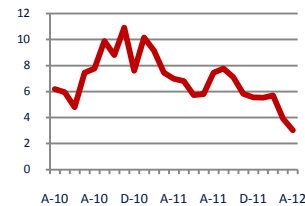
Sold Vs. List Price

97.1%



Months of Supply

3.0



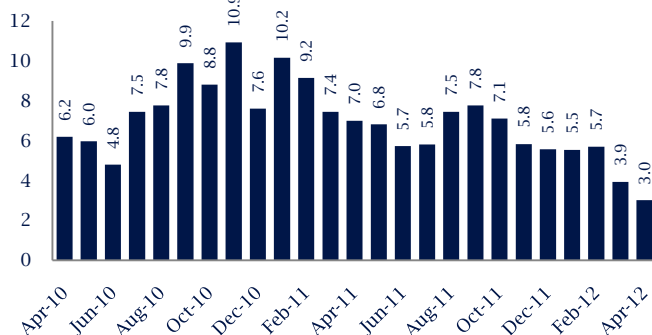
Down -15%
Vs. Year Ago

Up 42%
Vs. Year Ago

No Change
Vs. Year Ago

Down -57%
Vs. Year Ago

Months Of Supply



Months of Supply

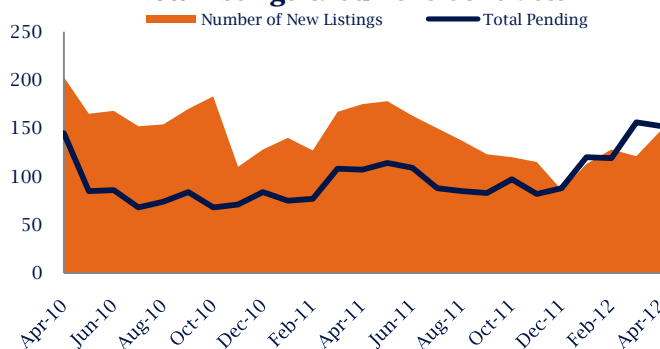
In April, there was 3.0 months of supply available in Bowie, compared to 7.0 in April 2011. That is a decrease of 57% versus a year ago.

Months of supply is calculated by dividing current inventory by current sales. It indicates how many months would be needed to sell all of the inventory available at the current rate of demand.

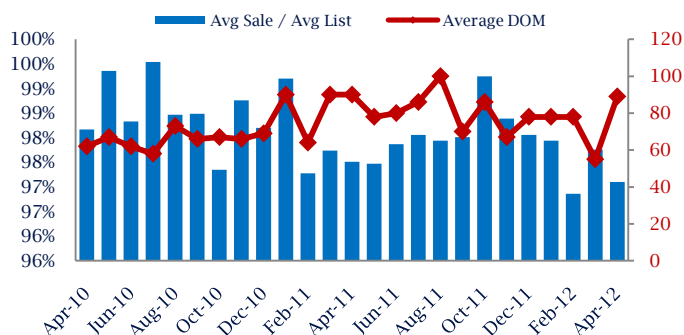
New Listings & Current Contracts

This month there were 148 homes newly listed for sale in Bowie compared to 175 in April 2011, a decrease of 15%. There were 152 current contracts pending sale this April compared to 107 a year ago. The number of current contracts is 42% higher than last April.

New Listings & Current Contracts



Sale Price/ List Price & DOM



Sale Price to List Price Ratio

In April, the average sale price in Bowie was 97.1% of the average list price, which is similar compared to a year ago.

Days On Market

This month, the average number of days on market was 89, lower than the average last year, which was 90, a decrease of 1%.

Bowie are defined as properties listed in zip code/s 20715, 20716, 20720 and 20721.

*Detached, Attached, and Condo varies by local area Multiple Listing Service (MLS) definition. For more information regarding your specific market, contact one of Long & Foster's knowledgeable and experienced sales associates.

Information included in this report is based on data supplied by MRIS and its member Association(s) of REALTORS, who are not responsible for its accuracy. Does not reflect all activity in the marketplace. Information contained in this report is deemed reliable but not guaranteed, should be independently verified, and does not constitute an opinion of MRIS or Long & Foster Real Estate, Inc.

